

# Pegasus Press

The Lexington Cancer Foundation, Inc. • [lexingtoncancerfoundation.org](http://lexingtoncancerfoundation.org) • Summer 2022

## 2022 Kentucky Bluegrass Wine Auction & Derby Gala



*Foundation Executive Director, Kristi Martin, Foundation Founder and President, Brenda Rice, Dr. Mark Newman, EVPHA of UK HealthCare and Dr. Mark Ever, Director of UK HealthCare Markey Cancer Center.*

On Thursday, May 5, 2022, the Foundation held the 16th Kentucky Bluegrass Wine Auction. That evening, the foundation awarded its largest grant since its inception in 2004.

A \$1.5 million dollar check was presented to Dr. Mark Newman, EVPHA of UK HealthCare, and Dr. Mark Evers, Director of UK HealthCare Markey Cancer Center, towards the new Infusion Center at the University's Markey Cancer Center and Comprehensive Care expansion, which is planned to be completed within the next few years.

The \$1.5 million lead gift launches a collaborative initiative between UK HealthCare and the foundation

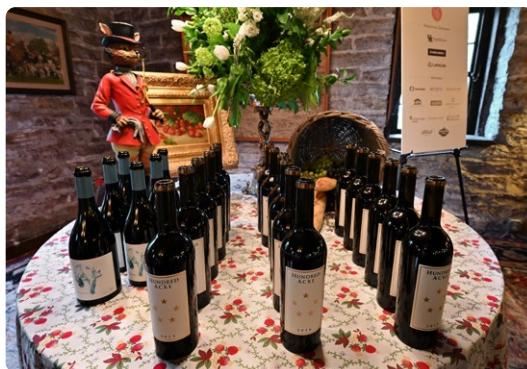
to raise a total of \$5 million towards the future Lexington Cancer Foundation Infusion Center. The centrally located infusion center will be designed for comfort and ease of access, making an impossibly hard situation a bit more comfortable for our patients.

Since 2004, over three million dollars has been contributed to UK HealthCare programming such as free lodging, transportation support, the Integrative Medicine Program, cooling caps for chemotherapy patients, research funding and free testing for ovarian cancer, genetic testing and much more. While that is an impressive number, it is important to note that the Foundation's and each of your commitments to UK HealthCare extends far beyond financial contributions. It also includes countless volunteer hours and advocacy on behalf of cancer patients and their families.

We are honored to be a campaign leader and partner with UK HealthCare to establish this new and improved infusion center in the new cancer facility. With over \$17 million dollars raised over the past 17 years, this gift strengthens our mission to improve the lives of cancer patients and their families throughout the Commonwealth for years to come.



*Amanda Gale and Kelly Macauley of NetJets*



*Hundred Acre Wine at the Friday, May 6, 100 point wine pairing dinner*



*Jayson Woodbridge with Bill and Donna Shively*

A big THANK YOU  
to our sponsors!



MRS. CATHERINE  
CLAY NEAL

## Wine Auction & Derby Gala

The 16th Kentucky Bluegrass Wine Auction, held on Thursday, May 5, 2022, was a tremendous success, raising over \$1.3 million dollars collectively over two days. 150 guests experienced a rare opportunity to enjoy a Hundred Acre Wine pairing dinner at the exquisite Apiary in downtown Lexington.

2022 Vintner Chair Jayson Woodbridge, founder and owner of Hundred Acre Wines, attended the auction with his wife Helen. Memento Mori Wines were also featured. Hayes Drumwright, Memento Mori Founder and Lauren Van Ness, Director of Sales and Hospitality, attended the event as well.



The evening featured violinist Caroline Campbell, pianist William Joseph and vocalist Pia Toscano. Caroline, nicknamed "violinist to the stars," has been hand-picked to play duets with multiple world-renowned artists. William has shared the stage with world-class artists such as John Mayer, Beyoncé, John Legend, Michael Bublé, and Alicia Keys. Pia has toured with American Idol's Live and Jennifer Lopez, and has performed on The Ellen Show, The Tonight Show, and more. Pia is currently on tour with David Foster and Andrea Bocelli.



The evening also featured seven live auction lots. The **Hundred Acre Wines auction lot** brought the highest winning bid of \$500,000. The lot, five large-format 100-point bottles from the personal cellar of legendary winemaker Jayson Woodbridge, sold twice for \$250,000. Mr. Woodbridge generated quite a bit of excitement as he spoke about the rarity of the wine experience.

Other auction lots included: a mixed vertical of priceless Pappy Van Winkle Vintage Bourbon, all signed by Julian Van Winkle III; a priceless Breeders' Cup experience at Keeneland Racetrack in Lexington, Kentucky; a trip to Four Seasons Resort in Jackson Hole, Wyoming; an Exclusive Resorts stay at a collection of three- to five-bedroom homes in the world's best locations; a thoroughbred breeding season to Justify, courtesy of Ashford Stud; and artist seats to see Andrea Bocelli in New York, with transportation by Netjets and a stay at the Lowell Hotel.



left: Jayson Woodbridge  
and Brent Rice at the  
2022 Kentucky Derby



right: Hundred Acre  
Wines founder  
Jayson Woodbridge



**On Friday evening, May 6, the Foundation held a private vintner chair wine pairing dinner for Hundred Acre Wines at the historic Iroquois Hunt Club in Lexington, Kentucky.**

60 guests attended the intimate dinner featuring Mr. Woodbridge's 100-point Hundred Acre Wines. One auction lot was featured—an opportunity to create your own personal barrel of Marks Mark and dinner at Rob Samuel's home. The barrel sold twice for a total of \$175,000. Rob Samuels, Managing Director of Markers Mark and grandson to the founders, and wife Janell attended the event.

The events collectively raised over \$1.3 million dollars in support of our mission. We are grateful to our donors, sponsors and vintners who participated in this special evening.



**Thank you to the donors and sponsors who made these events possible!**



*top: Lauren Van Ness and Hayes Drumwright, Memento Mori Wines*

*middle: Tampa, Florida patrons*

*bottom: James Miller and Clay Green*

*top: Heather Ryan and David Dube*

*middle: Jen and Marc Falcone, Kristen and Ron Winchell*

*bottom: Cindy and Henri Jean, Tami and Ron Broadrick*

*top: Memento Mori Wine*

*bottom: Kristine and Allan Creel*



THE LEXINGTON  
CANCER FOUNDATION, Inc.

*Improving the Lives of Cancer Patients & Their Families*

1504 College Way | Lexington, Kentucky 40502

PRSRT STD  
US Postage  
PAID  
PERMIT #1  
Lexington, KY

## { Save the Date! }

Watch for upcoming information on the 2023 Kentucky Bluegrass Wine Auction & Derby Gala: May 4  
Refer to our website for updated event information: [www.lexingtoncancerfoundation.org](http://www.lexingtoncancerfoundation.org)

## { Donate to LCF and help those suffering from cancer! }

LCF greatly appreciates your generous contributions to our organization and cause. Because of you, LCF is able to make a greater impact in the fight against cancer.

There is nothing more meaningful than a memorial donation made in memory of a loved one. Gifts in honor of a loved one can be a great way to show your support. LCF will send a letter to the person you indicate, suitable for the occasion, informing the individual or family that you have made a gift in his/her memory/honor.

### How do I make a donation?

- Make a gift in memory of a loved one
- Make a gift in honor of a loved one
- Make a gift to the LCF Endowment
- Make a gift to Wende Bell's Garden

We have made it easy for you to make a secure credit card donation online, via Stripe, or with a personal check by mail. Please visit the LCF website for more information.

